

SURVEY UNIT,

MINISTRY OF HOUSING AND INFRASTRUCTURE

Ameenee Magu, Maafannu, Male', 20392, Maldives.

Office (PABX): +(960) 3004300, Fax: +(960) 3004301

Email: survey@mhe.gov.mv

Web: www.mhe.gov.mv



CONTROL POINT DETAILS	Station Number PSM0043
Coordinate Information	
Geodetic	Grid
WGS 84	UTM Zone 43
Lat: 3.943348	E: 332313.0649
Long: 73.489662	N: 436017.3511
Ellp Height: -91.0837	Orth Height: 1.314
Island Name : K.Maafushi	Date: 20-Apr-2013

Monument description & method of survey:

- SS rod drilled in to QW / Monument labelled with s/s plate stating the point ID.
- GNSS Static Survey post Processing.

General site condition & access:

- Located at a clear corner of QW of harbour

Owner: K.Maafushi Council



DOWN TOWARD PSM

NORTH VIEW

EAST VIEW

FROM PSM UPTOWARD SKY

SOUTH VIEW

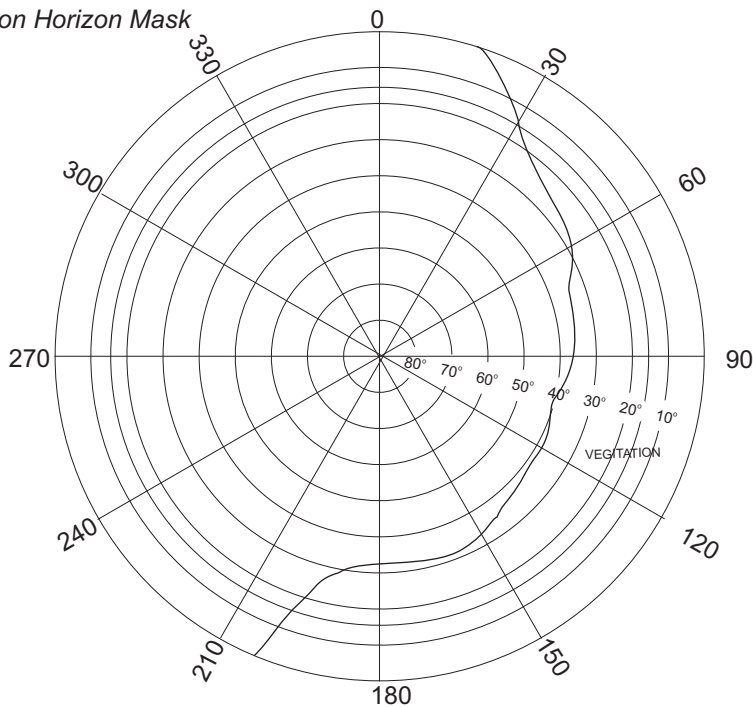
WEST VIEW

SITE INFORMATION

Station Number

P S M 0 0 4 3

Station Horizon Mask



Height above Marker that horizon was mapped from 1.500 m

Magnetic Declination Declination applied to this figure?
 Yes No

Locality



Harbour

PSM 0043

QW

Harbour Area



Sketched by: Shaheed

Scale: Not to scale

Date: 20/Apr/2013

SURVEY UNIT,

MINISTRY OF HOUSING AND INFRASTRUCTURE

Ameenee Magu, Maafannu, Male', 20392, Maldives.

Office (PABX): +(960) 3004300, Fax: +(960) 3004301

Email: survey@mhe.gov.mv

Web: www.mhe.gov.mv



CONTROL POINT DETAILS	Station Number PSM0044
Coordinate Information	
Geodetic	Grid
WGS 84	UTM Zone 43
Lat: 3.94149	E: 332204.5059
Long: 73.488688	N: 435812.1208
Ellp Height: -91.0196	Orth Height: 1.375
Island Name : K.Maafushi	Date: 20-Apr-2013

Monument description & method of survey:

- SS rod drilled in to QW / Monument labelled with s/s plate stating the point ID.
- GNSS Static Survey post Processing.

General site condition & access:

- Located at a clear corner of QW of harbour

Owner: K.Maafushi Council



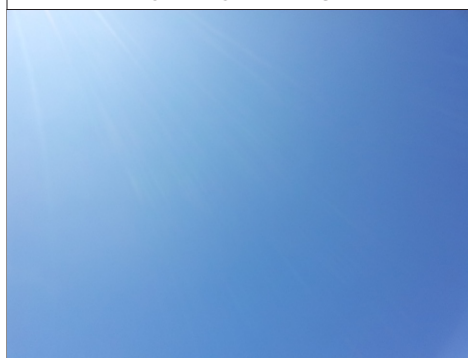
DOWN TOWARD PSM



NORTH VIEW



EAST VIEW



FROM PSM UPTOWARD SKY



SOUTH VIEW



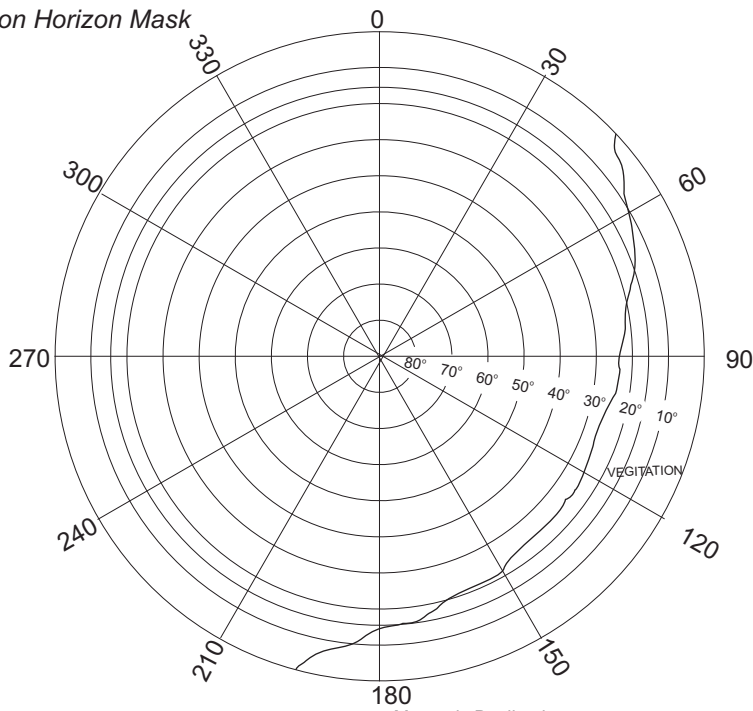
WEST VIEW

SITE INFORMATION

Station Number

P S M 0 0 4 4

Station Horizon Mask



Locality



Height above Marker that horizon was mapped from 1.500 m

Magnetic Declination Declination applied to this figure?
 Yes No



Harbour

QW

● PSM 0044

Harbour Area

Sketched by: Shaheed

Scale: Not to scale

Date: 20/Apr/2013

SURVEY UNIT,

MINISTRY OF HOUSING AND INFRASTRUCTURE

Ameenee Magu, Maafannu, Male', 20392, Maldives.

Office (PABX): +(960) 3004300, Fax: +(960) 3004301

Email: survey@mhe.gov.mv

Web: www.mhe.gov.mv



CONTROL POINT DETAILS	Station Number PSM0045
Coordinate Information	
Geodetic	Grid
WGS 84	UTM Zone 43
Lat: 3.940593	E: 332443.842
Long: 73.490845	N: 435712.5017
Ellp Height: -91.3601	Orth Height: 1.056
Island Name : K.Maafushi	Date: 20-Apr-2013

Monument description & method of survey:

- Concrete casted insitu to a 1ft pvc pipe length 1m / Monument labelled with s/s plate stating the point ID.
- GNSS Static Survey post Processing.

General site condition & access:

- Clear land near sea

Owner: K.Maafushi Council



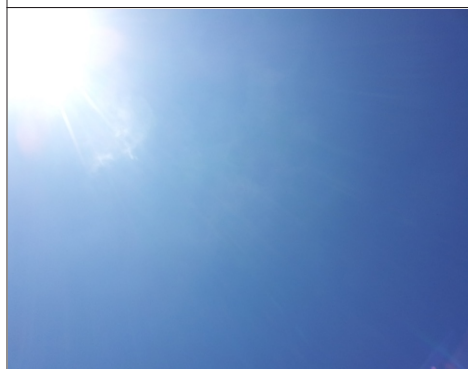
DOWN TOWARD PSM



NORTH VIEW



EAST VIEW



FROM PSM UPTOWARD SKY



SOUTH VIEW



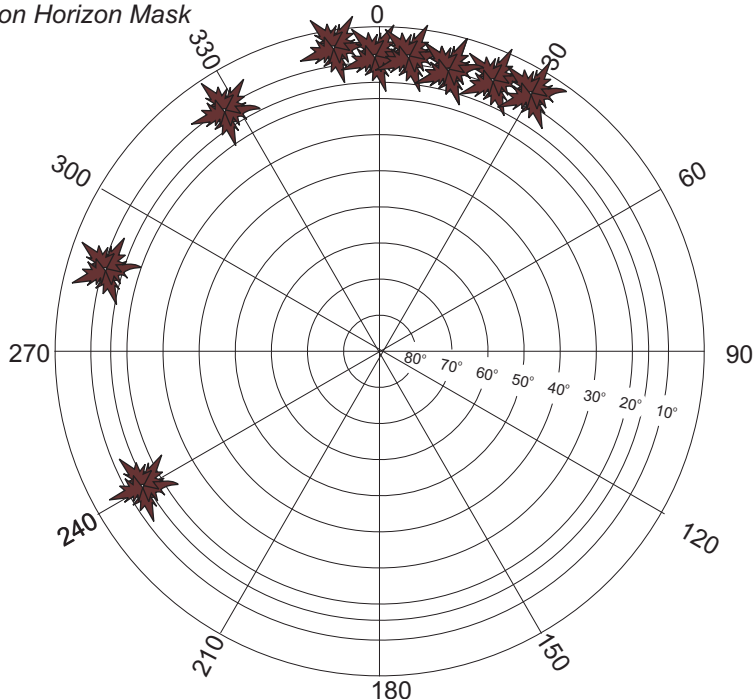
WEST VIEW

SITE INFORMATION

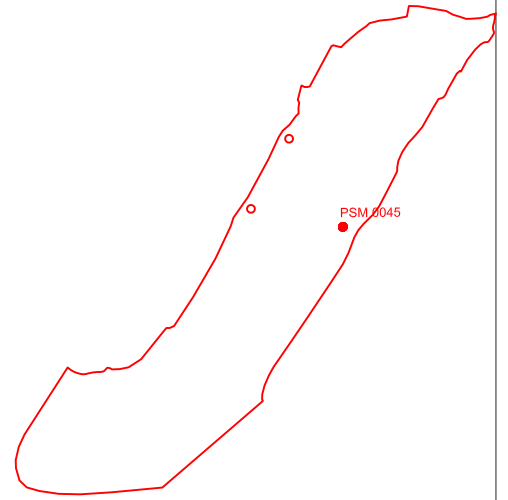
Station Number

P	S	M	0	0	4	5
---	---	---	---	---	---	---

Station Horizon Mask

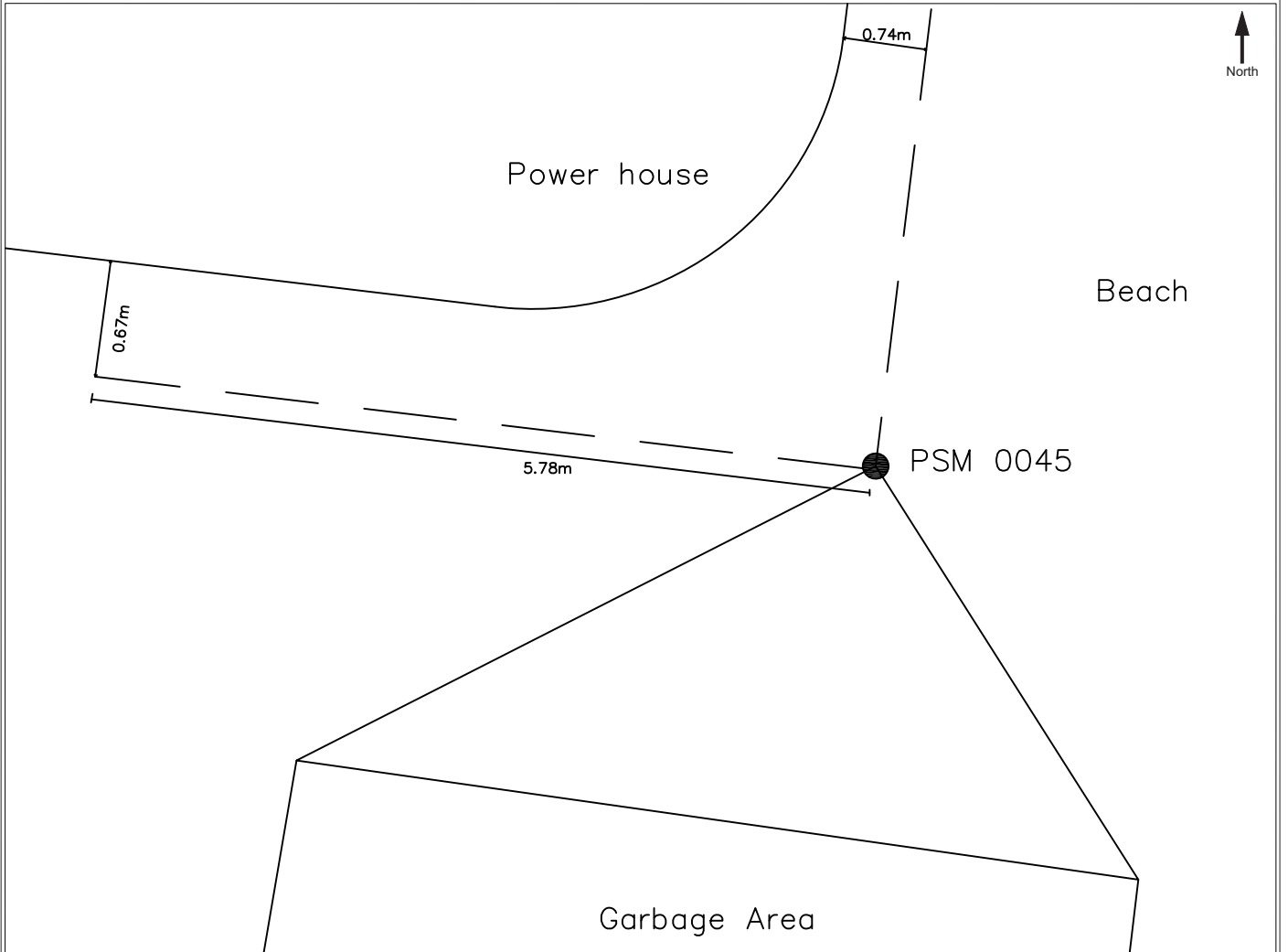
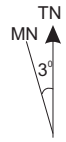


Locality



Height above Marker that horizon was mapped from 1.500 m

Magnetic Declination
Declination applied to this figure?
 Yes No



Sketched by: Shaheed

Scale: Not to scale

Date: 20/Apr/2013